

The Better Way to Manage Your Spend

We do the analysis for you!

When you want to drive cost savings and make better business decisions, you need reliable data at your fingertips. As a customer of Würth Industry, we'll compile the reports and analysis and send it to you automatically.



- Forecast more accurately
- See clear visibility of your purchases
- Minimize carrying costs
- Save time looking for right information
- Simplify your procurement processes and SKU management
- Gain actionable insights
- Reduce paperwork

Analysis Straight to Your In-Box



Offers high level overview of PPE and MRO spend



Provides insightful visualization of SKU procurement



Shows spend from multiple points of view – by month, product, or category



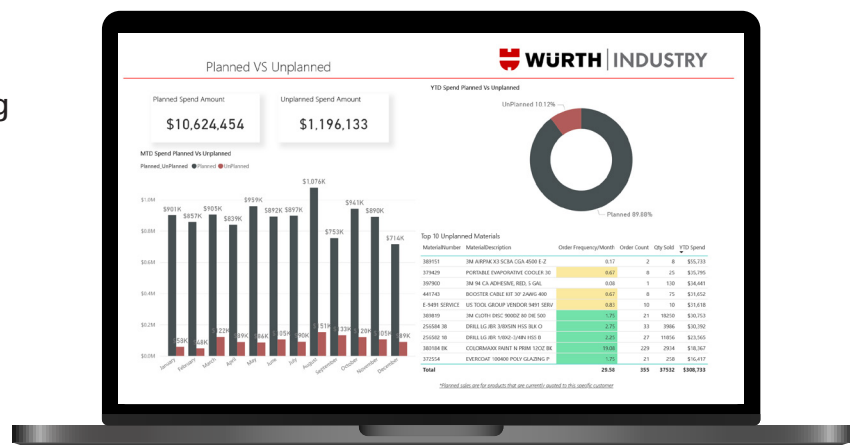
Compares monthly unexpected spending with planned spending



Identifies spikes or irregular patterns in spending to pinpoint areas for improvement



Breaks down unplanned spending to the SKU level, showing where unexpected spending occurs





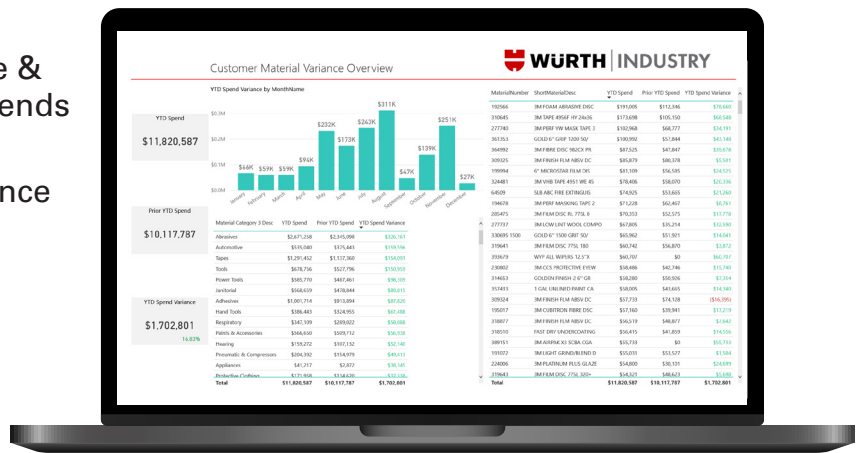
Proactively identifies positive & negative material variance trends



Reports usage & spend variance by month



Indicates category & SKU specific variance



Tracks the percentage of orders shipped on the same day they are placed



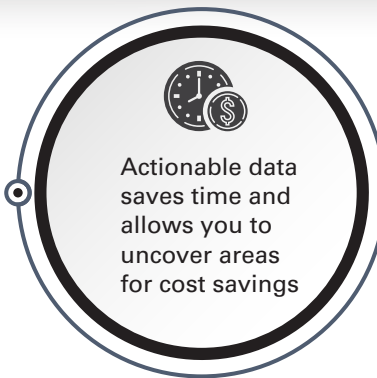
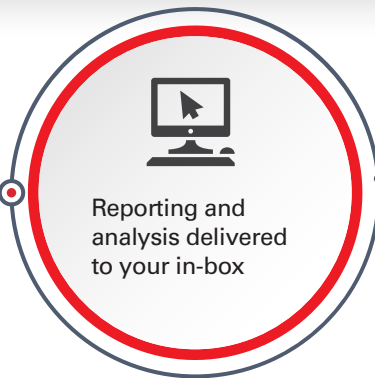
Highlights the average lead time before products are shipped out



Monitors monthly fill rates for your orders

Our Data Partners

What good is data if it's not reliable? We've partnered with the leaders in procurement technology. By leveraging the strength of these world class data platforms, we're able send you insightful, actionable reports.



Time-Saving Information.

- Spend & Material Analysis
- Cost Savings Tracking
- Spend & Usage Variance

In your in-box. Every month.

Would you like monthly spend data analysis reports? As our customer, you'll receive this comprehensive, time-saving data. It's just one of the value-added services we provide.

Ask us about it today!
Call 800.568.2764.

DirectConnect